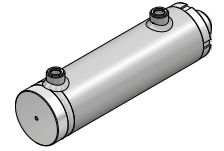
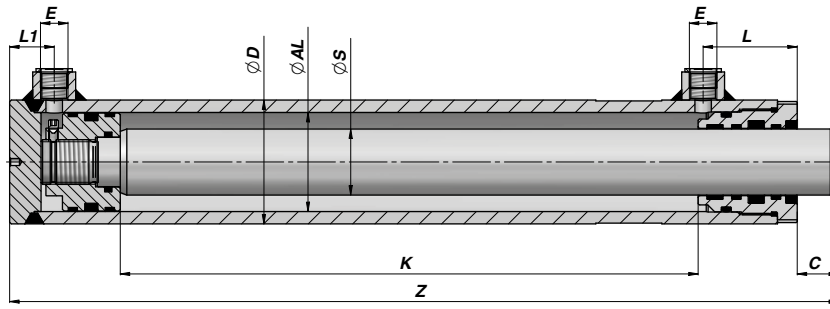


CILINDRO DOPPIO EFFETTO STANDARD
STANDARD DOUBLE ACTING CYLINDER

NEW! HMOPM

Series P350



Codice Code	K	Z	kg	E BSP	L	L1	C	Codice Code	K	Z	kg
ØD 75 ØAL 60 ØS 40											
HMOPM0600400200	200	350	8,71	3/8"	57	30	23				
HMOPM0600400400	400	550	13,12								
HMOPM0600400600	600	750	17,58								
HMOPM0600400800	800	950	22,03								
HMOPM0600401000	1000	1150	26,48								
ØD 85 ØAL 70 ØS 40											
HMOPM0700400200	200	375	11,21	3/8"	60	38	24				
HMOPM0700400400	400	575	16,00								
HMOPM0700400600	600	775	20,81								
HMOPM0700400800	800	975	25,62								
HMOPM0700401000	1000	1175	30,43								
ØD 100 ØAL 80 ØS 50											
HMOPM0800500200	200	395	17,11	1/2"	67	42	28				
HMOPM0800500400	400	595	24,59								
HMOPM0800500600	600	795	32,06								
HMOPM0800500800	800	995	39,53								
HMOPM0800501000	1000	1195	47,01								
ØD 110 ØAL 90 ØS 60											
HMOPM0900600200	200	400	21,44	1/2"	70	48	30				
HMOPM0900600400	400	600	30,75								
HMOPM0900600600	600	800	40,06								
HMOPM0900600800	800	1000	49,37								
HMOPM0900601000	1000	1200	58,69								
ØD 120 ØAL 100 ØS 60											
HMOPM1000600200	200	405	24,33	1/2"	70	47	31				
HMOPM1000600400	400	605	34,13								
HMOPM1000600600	600	805	43,93								
HMOPM1000600800	800	1005	53,73								
HMOPM1000601000	1000	1205	63,53								
ØD 145 ØAL 120 ØS 70											
HMOPM1200700200	200	435	38,95	1/2"	75	58	33				
HMOPM1200700400	400	635	53,11								
HMOPM1200700600	600	835	67,27								
HMOPM1200700800	800	1035	81,42								
HMOPM1200701000	1000	1235	95,59								

Progettato nel rispetto della normativa DNV PART 4 CHAPTER 7 RULES SHIPS / HIGH SPEED, LIGHT CRAFT AND NAVAL SURFACE CRAFT – PRESSURE
Designed in accordance with the norm DNV PART 4 CHAPTER 7 RULES SHIPS / HIGH SPEED, LIGHT CRAFT AND NAVAL SURFACE CRAFT – PRESSURE

MATERIALE TUBO: ACCIAIO St 52.3 DIN 2391 ISO H8 MATERIALE ASTA: ACCIAIO 20MnV6 CROMO 25 µm ±5 Rating 9 / 200h ISO 10289 – 1999/ISO 9227-NSS
TUBE MATERIAL : STEEL St 52.3 DIN 2391 ISO H8 ROD MATERIAL : STEEL 20MnV6 CHROME 25 µm ±5 Rating 9 / 200h ISO 10289 – 1999/ISO 9227-NSS

A RICHIESTA - ON REQUEST:

STELO : 42CrMO4 BONIFICATO e TEMPRATO - CROMO 25 µm ±5 Rating 9 / 200h ISO 10289 – 1999/ISO 9227-NSS

ROD : 42CrMO4 RECLAIMED and INDUCTION-HARDENED - CHROME 25 µm ±5 Rating 9 / 200h ISO 10289 – 1999/ISO 9227-NSS

CARATTERISTICHE TECNICHE : VEDI PAGINA 32 - TECHNICAL SPECIFICATIONS : SEE PAGE 32